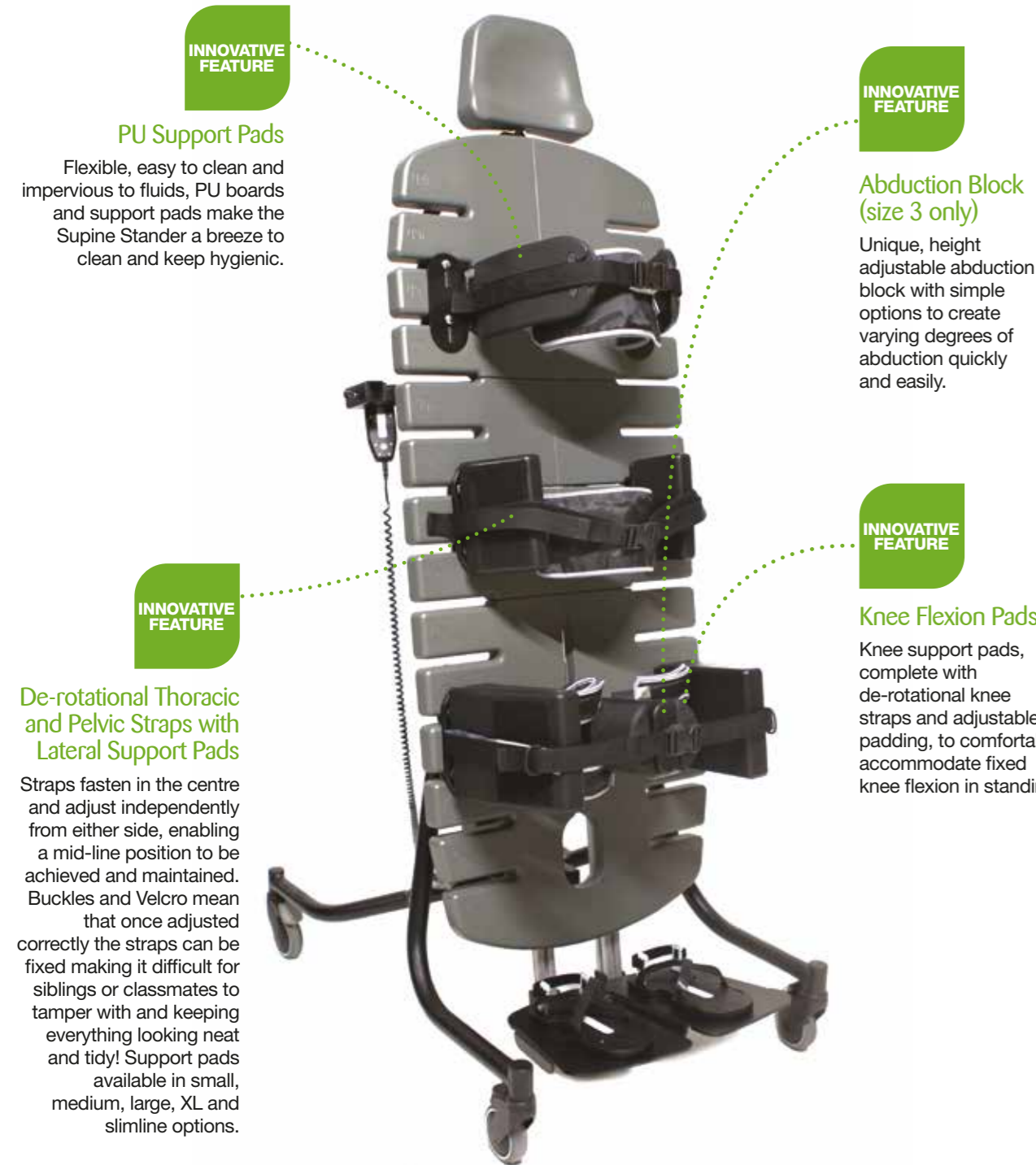


Supine Stander by Jenx

The Jenx Range of Supine Standers provide robust and easy to use standing solutions. Offering unrivalled support and safety in three sizes, Jenx Supine Standers are suitable for children standing in a supine position from around 9 months right through to adults of up to 100kg.

Standing is a dynamic process, requiring tiny movements of many joints alongside control of the limbs. Jenx Supine Standers are designed to support standing by allowing joints to be supported but mobile – training balance and encouraging development. Smooth and easy angle adjustments take every Jenx Supine Stander from horizontal right through to upright, facilitating both quick and easy transfers (you can even remove all supports for added ease when hoisting), and giving unlimited scope for setting the precise standing angle required for every user. It provides durable quality, outstanding postural support and the exceptional pelvic stability that is essential for encouraging standing. Every size of standing frame can be fully reclined to a horizontal position with all support removed, minimising transfer time and manual handling risks to the user and carer.

Created with significant input from parents, Jenx Supine Standers are carefully designed to draw attention to the user rather than the piece of equipment in use, making the user the star of the show! Ease of use coupled with thoughtful design and durability make Jenx Supine Standers the only sensible choice for supine standing for children or adults of any age.



INNOVATIVE FEATURE

PU Support Pads

Flexible, easy to clean and impervious to fluids, PU boards and support pads make the Supine Stander a breeze to clean and keep hygienic.

INNOVATIVE FEATURE

Abduction Block (size 3 only)

Unique, height adjustable abduction block with simple options to create varying degrees of abduction quickly and easily.

INNOVATIVE FEATURE

Knee Flexion Pads

Knee support pads, complete with de-rotational knee straps and adjustable padding, to comfortably accommodate fixed knee flexion in standing.

INNOVATIVE FEATURE

De-rotational Thoracic and Pelvic Straps with Lateral Support Pads

Straps fasten in the centre and adjust independently from either side, enabling a mid-line position to be achieved and maintained. Buckles and Velcro mean that once adjusted correctly the straps can be fixed making it difficult for siblings or classmates to tamper with and keeping everything looking neat and tidy! Support pads available in small, medium, large, XL and slimline options.

Always Encouraging...

Standing is a great way to improve your child's outlook on the world and their physical development.

Improves blood pressure & circulation



Aids respiration & speech

Helps digestion, bowel & bladder emptying



Helps relieve pressure created during sitting

Encourages bone & muscle development



Supports pelvis, thighs & feet so children can join in everyday activity

Gives a new perspective and ways to participate



Provides opportunities to increase social skills

Children also gain huge psychological advantages from standing, as well as those important physical and development benefits.



Smooth & Simple Adjustment

Angle can be adjusted with the child in the standing frame and is easily set using the angle gauge on the frame. Frame can be tilted to be completely horizontal and is power assisted on the size 2 & 3 frames causing less strain for carers. Also, exclusively on the Supine Stander size 3, numbered boards mean that set-ups can easily be recorded and recreated – ideal in a multi-user environment.

INNOVATIVE FEATURE



Always Thoughtful

Outstanding features and benefits

Angle Adjustment

Each user will have a slightly different posture in standing and need slightly different support. The angle of the support surface can be adjusted from horizontal through to upright, 90°. And, because the adjustment is infinite, each Supine Stander can be set to exactly the right angle for each individual user. This means progress can be monitored and the angle of the board altered in line with changes in ability.

Jenx Multigrip™

The original Jenx Multigrip™ headrest is a unique and pioneering design, carefully developed to mimic the infinitely adjustable support offered by caring hands. Individual fingers on the Multigrip™ are adjusted to cushion, support and control almost any head position. Highly padded, removable and washable covers make Jenx Multigrip™ head supports a practical solution for almost any child. Multigrip™ head supports are available in a range of different sizes, all including a choice of highly flexible fixing bracket, giving adjustment for height, depth and angle. Through this combination there is scope to block areas that may otherwise pose a hazard to children prone to getting their heads stuck beneath more conventional headrest designs.

Innovative Knee Support

Knee support pads available in 4 sizes, complete with de-rotational knee straps. Size 2 & 3 knee straps are uniquely designed to avoid pressure on the patella while still providing flexible, de-rotational support. Knee flexion option is also available to cater for fixed flexion at the knees.

Split Footplate (Supine 3 only)

Size 3 Supine Stander has a split footplate, enabling one foot to be positioned higher than the other without the need for sandal raising blocks.



PU Support Pads

Polyurethane, or PU is a highly flexible and versatile material used across many elements in the Jenx range. Impervious to fluids and therefore easy to clean and ideal from an infection control and re-issue point of view. Particularly beneficial on standing products where soiling of equipment which if upholstered can be difficult and time consuming to clean – with PU simply clean with an antibacterial spray or wipe and the product is ready to be put right back into use.

Adjustable and Safe Hip & Chest Straps

The innovative straps close in the centre and are adjusted at each end for length. By adjusting the straps in this way you can ensure the user is positioned symmetrically – helping to keep them upright and comfortable and maximising the benefits of standing.

Visit jenx.com for additional product details.

Always Configurable

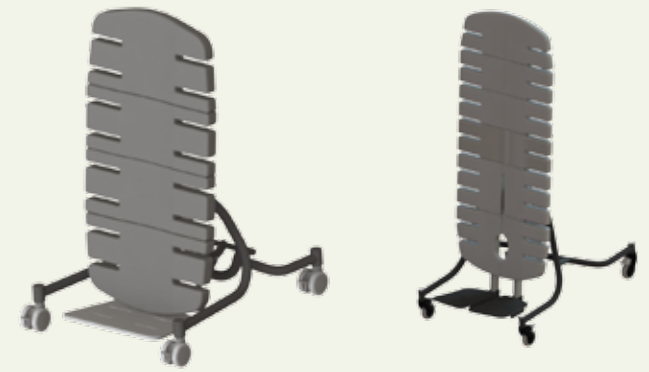
Accessories

The Supine Stander is a modular product, allowing you to choose specific accessories to meet the exact requirements of each user. Visit jiraffe.org.uk for additional accessory details.

Supine Stander Frame

Basic Supine Stander unit includes:

- Base with 4 lockable swivel castors
- PU boards
- One piece footplate (size 1 & 2)
- Split footplate (size 3)
- Boards available in 5 colours: blue, pink, lime, red and neutral.



Multigrip™ Headrests

The original and innovative Jenx Multigrip™ headrest is now available in 3 sizes for all Jenx seating and standing systems. All Jenx Multigrip™ head supports have a choice of various highly flexible fixing brackets, all of which give adjustment for height, depth and angle.



Head Pad Cushion

Use to provide simple head support. Simply Velcro into place. Requires 2 small side pads to be used.



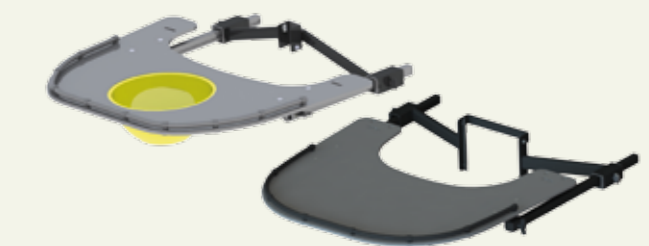
Support Pads (pair)

PU support pads available in a range of sizes including slimline and high rise options. Can be used at the hips or chest and are adjustable for height, width and angle and can be off-set to brace a scoliosis or accommodate and support unique positioning needs. Support pads come complete with appropriate size de-rotational strap as standard.



Multi-use Tray

Removable tray available in three sizes. Size 1 & 2 come complete with removable bowl and tray infill.



Tray Elbow Blocks

Used to encourage arms into a midline position and/or to block excessive retraction.



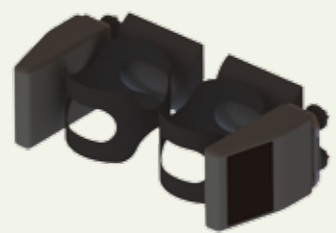
Knee Support

Knee support pads available in 4 sizes complete with de-rotational knee straps. Size 2 & 3 knee straps are uniquely designed to avoid pressure on the patella while still providing flexible, de-rotational support.



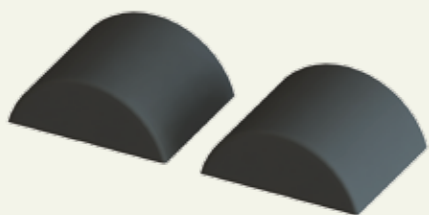
Knee Flexion Options

Knee flexion options are also available in different sizes to cater for fixed flexion at the knees. Shown here with arched foam pads.



Arched Foam Pads

Used with knee flexion pads or abduction block for extra padding where required.



PU Spacer Blocks

For additional abduction or spacing on knee flexion pads. Fully moulded from hygienic PU. Simply Velcro into place.



Abduction Block

Removable abduction block. Simple to attach. Available for Supine Stander size 3 only.



Angle Adjustable Footplate

Footplate with simple adjustment for dorsi and plantarflexion. Complete with two running slots for sandals.



Sandals

Available in 4 different sizes to accommodate any size of foot, even when wearing splints. Jenx sandals are interchangeable across the entire range of Jenx seating and standing products.



Sandal Raising Blocks

Available for every size of Jenx sandals, the raising block kits give the sandals that extra bit of height where needed! Use to accommodate for leg length discrepancy or use to raise the height of the footplate on any product to maximise the available growth.



NB: One kit needed per individual sandal.

Always Adaptable



Demonstrating Tilt-in-Space function



Supine Stander by Jenx Technical Specifications

	Units	SUP01 Supine Stander 1	SUP02 Supine Stander 2	SUP03 Supine Stander 3
Age Range (approx)	mths/yrs	9mths - 4yrs	3yrs - 11yrs	10yrs - 18yrs
Base Size	mm/inch	575 x 660 / 22½ - 26	650 x 995 / 25½ - 39	650 x 995 / 25½ - 39
Tilt-in-Space (supine) (90° = upright)	degrees	80° - 0°	80° - 0°	80° - 0°
Max User Weight	kg/lb	25kg / 55lb	50kg / 110lb	100kg / 220lb
Max User Height	mm/inch	1055 / 41½	1455 / 57¼	1900 / 74¾
Chest Width (min/max)	mm/inch	130-310 / 5 - 12¼	130-310 / 5 - 12¼	220-440 / 8½ - 17¼
Hip Width (min/max)	mm/inch	130-310 / 5 - 12¼	130-310 / 5 - 12¼	220-440 / 8½ - 17¼
Knee Pad Width (min/max)	mm/inch	130-310 / 5 - 12¼	130-310 / 5 - 12¼	220-440 / 8½ - 17¼
Modular Board Height From Footplate (min/max)	mm/inch	500-1070 / 19½ - 42	900-1470 / 35½ - 57¾	1540-1640 / 60½ - 64½
Tray Depth To Cut Out	mm/inch	370 / 14½	370 / 14½	370 / 14½
Tray Width	mm/inch	680 / 26¾	705 / 27¾	705 / 27¾

Always here

To arrange a demonstration or assessment with the Jenx Supine standing system, just get in touch!

My name is:

Please ring me on:

Or email me at:

Seating

Standing

Sleeping

Therapy



Supine Stander by Jenx

A robust, supported, supine standing system for children aged 9 months – 11 years



Always Supportive...

Jenx Limited, Wardsend Road, Sheffield S6 1RQ, United Kingdom
tel: +44 (0) 114 285 3376
email: export@jenx.com
web: www.jenx.com



Jenx Limited, Wardsend Road, Sheffield S6 1RQ, United Kingdom
tel: +44 (0) 114 285 3376
email: export@jenx.com
www.jenx.com



Visit jenx.com for more information.